



**1 & 2 BED STYLISH APARTMENTS
& 3 BEDROOM VILLAS**



Mr. Atta Muhammad

Message from CEO

As CEO of ROBUST GROUP I firmly believe that construction services have a direct and vital impact on the quality of life for all people. Therefore, as a real estate development company it is our core responsibility to safeguard this quality of life by adopting highest level of professionalism and integrating ethics into our operations.

At Robust, we always strive for innovative and cost effective construction solutions for our valued customers. Our driving force is to think, plan, and implement outside the box. I would like to take this opportunity to extend my deep appreciation to our business associates and clients for their continued faith in and support to the company and its management.

Atta Muhammad



ROBUST GROUP

Robust Group is a fast-growing brand in design, construction, and development in real estate industry of Pakistan and outside world.

We are committed to excellence in every aspect of our services and always strive for providing innovative solutions to our valuable clients. We specialize in the construction of multi-storied buildings, roads and infrastructure projects, educational buildings, industrial complexes, recreational facilities, land development, and housing projects.

To us, it is vital that we treat every customer with the utmost dedication and responsibility. This approach has built strong relationships with our customers and they continue to show their confidence in us through strong recommendations and loyalty. We also acknowledge and respect the emotional attachment of our clients with their construction projects and take full responsibility for the best use of their hard-earned money.



ROBUST
ROBUST CONSTRUCTION SOLUTION (PVT) LTD.



ROBUST
ROBUST DEVELOPERS (PVT) LTD.

ABOUT THE PROJECT

HADAYA HOMES

HADAYA HOMES is a combination of innovative thinking and creative solutions for those who wish to have their own home at a prestigious location of Lahore city at a very affordable price.

It is an aesthetically designed community where we put style, comfort, and affordability all together. At **HADAYA HOMES** we are providing 1 & 2 bed apartments & 3 bedroom villas with all necessities of life.

SALIENT FEATURES


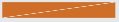


- Gated Community
- 24/7 Security
- CCTV Surveillance
- Maintenance Services
- Roof Top Garden
- Car Parking
- Mosque & Commercial Area

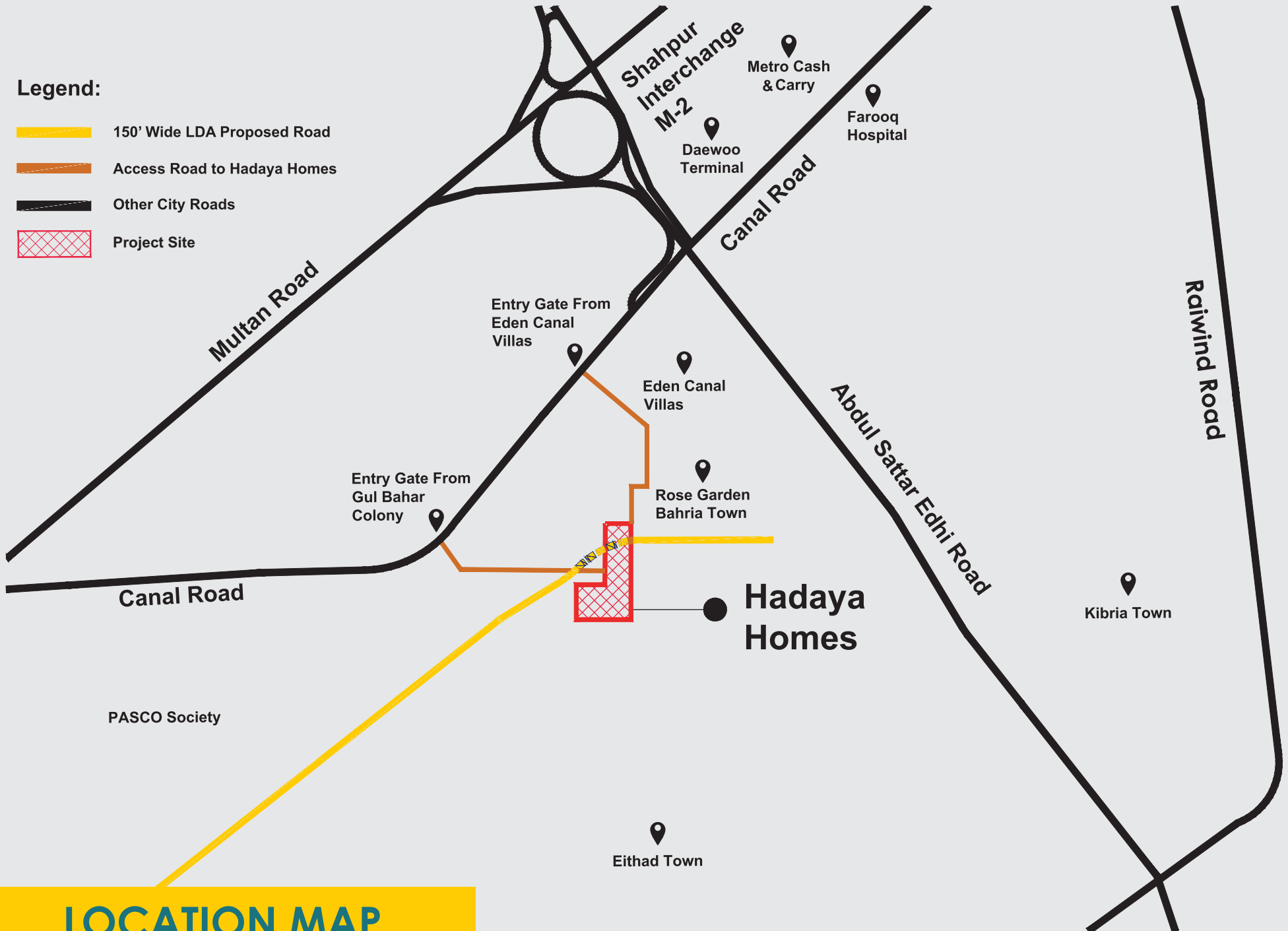


A Project by



Legend:

-  150' Wide LDA Proposed Road
-  Access Road to Hadaya Homes
-  Other City Roads
-  Project Site



LOCATION MAP

Location of **HADAYA HOMES** is one of the key value-adding features of the project. It is located at Canal Bank Road just 1.5 km from **Thokar Niaz Baig**, adjacent to **Eden Canal Villas** and opposite **Bahria Rose Garden**.

The site is also linked with **Motorway M-2, Multan Road, Raiwind Road** and also surrounded by a number of important landmarks like **Farooq Hospital, Metro Cash & Carry, Daewoo Bus Terminal, and Orange Line Metro Station**.



1 - BED APARTMENT

Ground Floor

Net Area: 734 SFT

LOUNGE 14'-0" X 11'-7.5"

DINING 13'-11" X 9'-4.5"

POWDER 4'-0" X 4'-4.5"

KITCHEN 9'-6" X 8'-4.5"

OPEN TO SKY 3'-10" X 4'-4.5"

BEDROOM 10'-5" X 13'-9"

BATH 6'-0" X 5'-0"

LAUNDRY 9'-6" X 5'-0"

One Bed apartment comes with a spacious bedroom along with attached bath and fully fitted wardrobe, a proper kitchen with quality woodwork, family dining area, one powder room, laundry area, and a spacious living room with aesthetically designed media wall.

Layout of one bed apartment is carefully designed to fit the lifestyle of a small family or couple.

**1 - BED
GROUND FOOR**



2 - BED APARTMENT

1st & 2nd Floor

Net Area: 887 SFT

BALCONY 4'-0" X 4'-4.5"

LAUNDRY 6'-1.5" X 8'-0"

LOUNGE 14'-0" X 12'-3.5"

KITCHEN 8'-0" X 14'-0"

BEDROOM 10'-5" X 13'-8"

OPEN TO SKY 3'-10" X 4'-4.5"

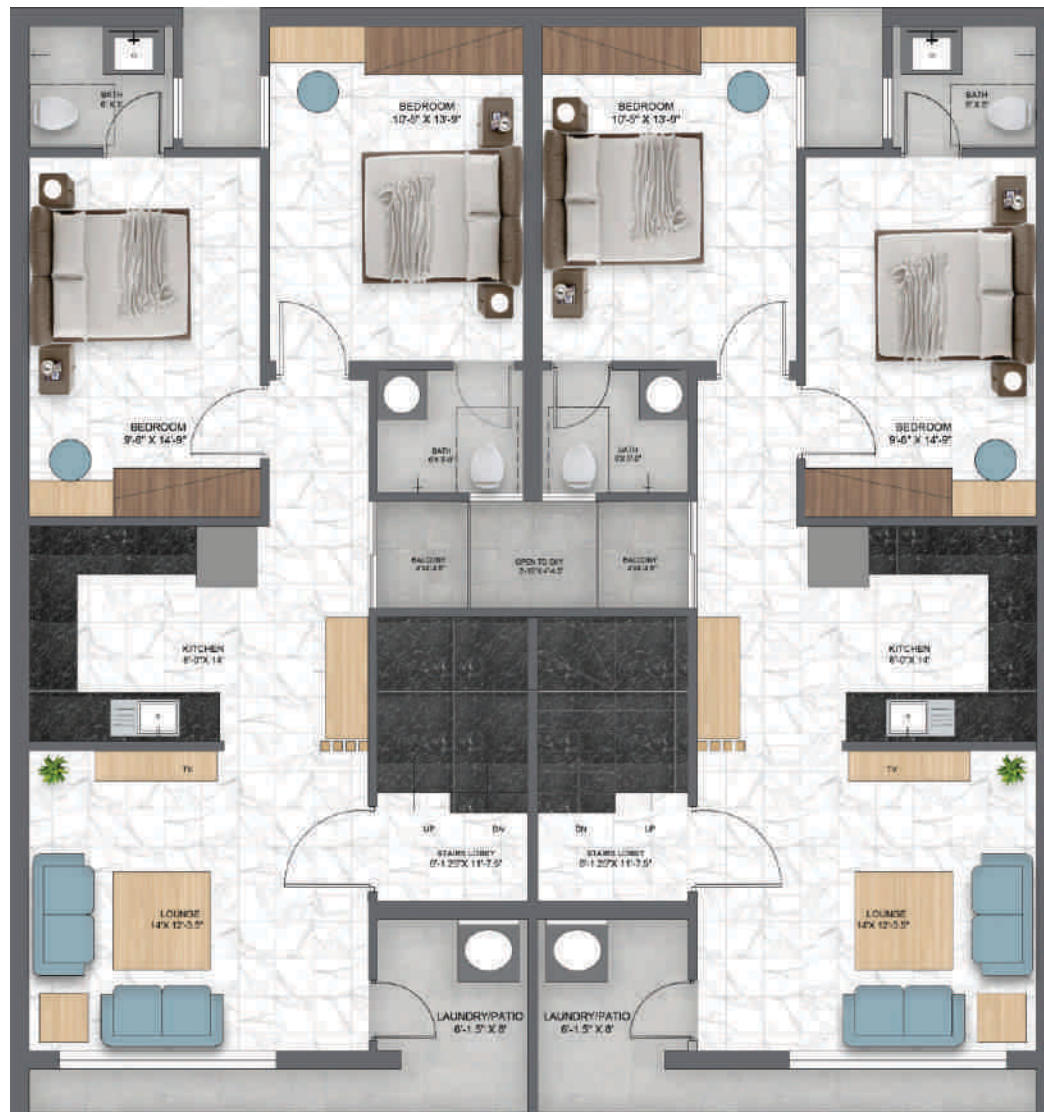
BATH 6'-0" X 5'-0"

BEDROOM 9'-6" X 14'-9"

BATH 6'-0" X 5'-0"

Two Bed apartments are located at 1st and 2nd floor and perfectly suitable for small families. Each unit comes with two standard bedrooms along with attached bathrooms and fully fitted wardrobes, a proper kitchen with quality wood work, a spacious living room with beautifully designed media wall, laundry and a terrace.

**2 - BED
1ST & 2ND FLOOR**



3 - BEDROOM VILLAS

Double Story

Net Area: 1827 SFT

LOUNGE

12'-0" X 14'-3"

DINING

17'-0" X 8'-6"

POWDER

3'-1.5" X 4'-3.5"

BEDROOM

12'-0" X 11'-0"

BATH

7'-9" X 5'-0"

LAUNDRY

13'-0" X 4'-7.5"

KITCHEN

8'-9" X 11'-0"

STUDY

6'-9" X 11'-0"

DRESSING

3'-4" X 6'-4.5"

Keeping in mind the requirement of end users we have recently launched a new feature of 3 Bedroom stylish villas at Hadaya Homes. These **4.35 Marla** Villas are the epitome of comfortable living at an affordable price. With topnotch interiors & fixtures which are by all means of international quality and all the basic & advanced amenities these residential villas are a distinct and opulent lifestyle.

**3 - BED
GROUND & FIRST FLOOR**



Interior



In **interior designing** of the apartment the primary goal was to create a cozy and relaxing domestic environment that would transform the home into a moment of calm - a restorative space for relaxing and recharging.

Indeed, it is a functional home, sober but elegant and refined, with a balanced and thoughtful use of colors and materials, contemporary furniture, hint of modern finished and a fusion of teak and beechwood lead us to create a perfectly balanced and spacious interior with an everlasting trendy look.

Interior



**1-BED APARTMENT
GROUND FLOOR PLAN**

Interior



Interior



2-BED APARTMENT
1st & 2nd FLOOR PLAN

Interior



Interior



**3-BED VILLA
GROUND & FIRST FLOOR**





GREY STRUCTURE SPECIFICATIONS:

- First Class Brick Masonry
- Chenab Sand
- 60 Grade Steel (Model, AFCO)
- Anti Termite Treatment
- RCC Roofs
- Electrical Conduits (Popular)
- Plumbing / Sewerage (Popular)





AMENITIES



24/7 Security



Commercial Area



Car
Parking



Mosque



CCTV
Surveillance



Open Air Gym



Maintenance
Services



Roof Top Garden



ADAYA
HOMES

A Project by



FINISHING SPECIFICATIONS:

- Electrical Cables (Copper Gate/Fast)
- POP False Ceiling
- Porcelain Tile Flooring - Ghani (600mm x 600mm)
- Porcelain Bath Tiles (Ghani)
- Black Granite Kitchen Top
- Engineered Wooden Doors
- Bath Fittings (Faisal)
- Kitchen Woodwork (UV Sheet/Waterproof PVC)
- Kitchen Accessories (Hood & Hob - Cannon)
- Wooden Wardrobes (MDF)
- Paint & Polish Work (Nippon)
- Wallpapers in Bedrooms
- Media Wall for Living Room
- Aluminum Windows (Pakistan Alco with 6mm Ghani Glass)



FURNISHING SPECIFICATIONS (Optional)

1 Bed

- Bedroom: Queen Size/Double Bed with Side tables
- Living Room: Sofa Noble 2 Seater with Cushions (Interwood)
- 2 Chairs with Hazel Center Table (Turkish)
- 2 Hazle Center Tables
- TV Console
- 50" LED TV (Samsung)
- 6 Tikado Dining Chairs with Lauren Marble Table (Turkish)
- Automatic Washing Machine (Dawlance)
- Curtains
- Planters
- Lamps & Accessories
- Oven (Cannon)
- Refrigerator (Kenwood)

*Customized Furnishing Available on demand

*Cost will be added separately



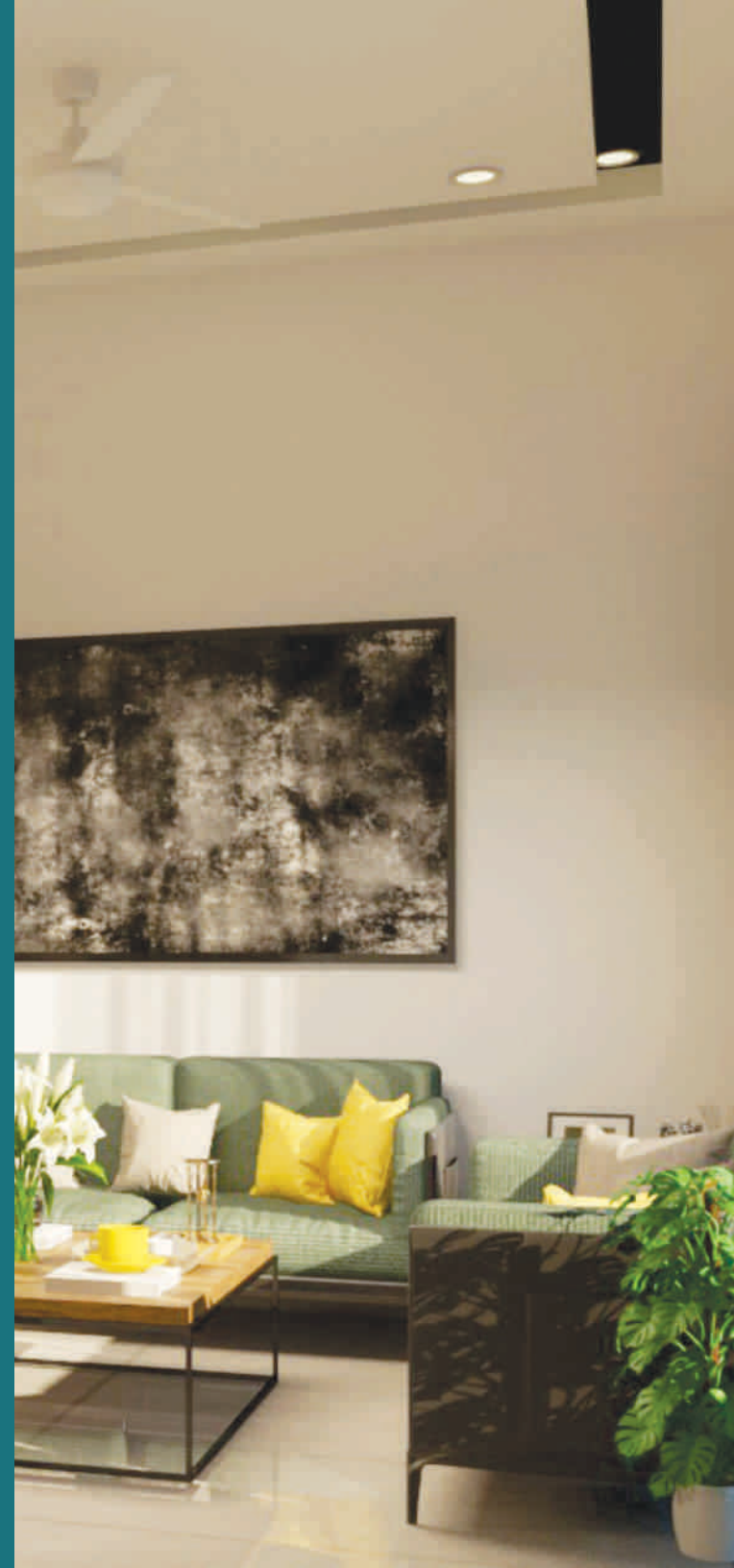
FURNISHING SPECIFICATIONS (Optional)

2 Bed

- 2 Bedrooms: Queen Size/Double Bed with Side tables
- Living Room: Sofa Kessel 2 Seater with Cushions (Interwood)
- 2 Kum Saati Centre Table (Turkish)
- TV Console
- 50" LED TV (Samsung)
- Oven (Cannon)
- Refrigerator (Kenwood)
- Automatic Washing Machine (Dawlance)
- Curtains
- Planters
- Lamps & Accessories
- Ottoman Puffys

*Customized Furnishing Available on demand

*Cost will be added separately



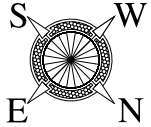


ROOF TOP GARDEN

At **HADAYA HOMES** we are providing an aesthetically designed lush green rooftop garden to the residents of the society, so that they can have an interaction with the nature. Roof top gardens look gorgeous, have a great view, provide a smart and quick way to enjoy and relieve stress. In addition to roof top garden there will be an open air gym to maintain your health and fitness.

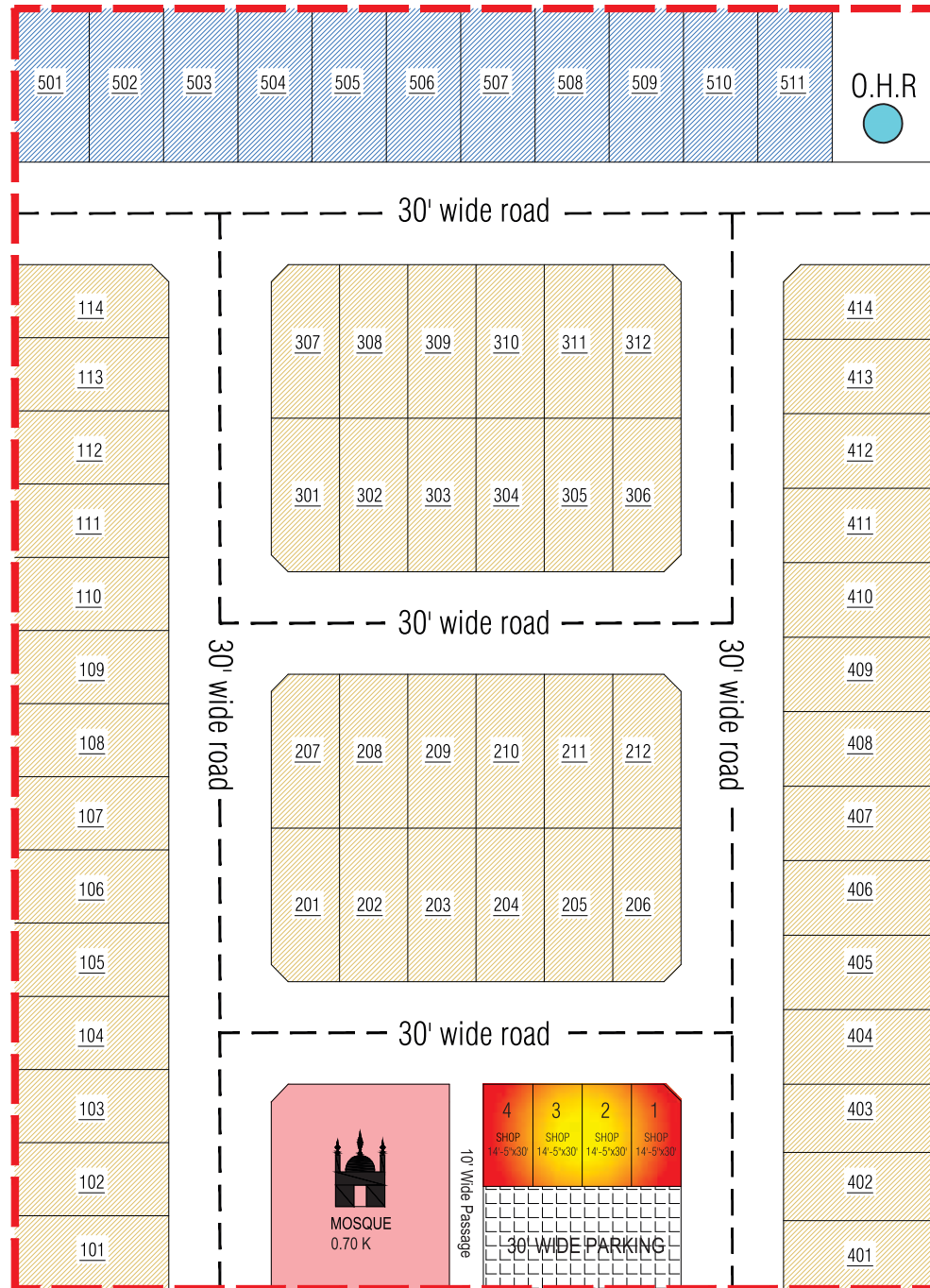






LEGEND:-

- Apartments
- 3-Bed Villa
- Plot No.s of Block 1 101 to 114
- Plot No.s of Block 2 201 to 212
- Plot No.s of Block 3 301 to 312
- Plot No.s of Block 4 401 to 414
- Plot No.s of Block 5 501 to 511
- Grand Mosque
- Commercial Shops
- Parking for Shops



Build your ideas



ROBUST

DESIGN - CONSTRUCTION - DEVELOPMENT

HEAD OFFICE:

956 Services Road, Block L Phase 2
Johar Town, Lahore
+92 42 32335792

SITE OFFICE:

1.5 Km from Thokar Niaz Baig, Canal
Bank Road. Lahore.
+92 313 7872007



[robust.com.pk](https://www.instagram.com/robust.com.pk)



[RobustGroup.pk](https://www.facebook.com/RobustGroup.pk)



www.robust.com.pk